

## THERM-A-GAP™ 570 & 580

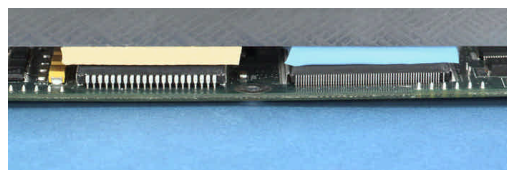
### Thermally Conductive Gap Fillers

#### DESCRIPTION

THERM-A-GAP™ 570 and 580 are the latest offerings from Chomerics in highly conformal, thermally conductive gap filler pads. The materials consist of an ultra-soft silicone elastomer filled with ceramic particles. THERM-A-GAP elastomers are used to fill air voids between PC boards or high temperature components and heat sinks, metal enclosures, and chassis. The exceptional conformability of these advanced materials enables them to blanket highly uneven surfaces, wetting out mating surfaces in order to efficiently transfer heat away from components.

These materials are available in two versions: G570/580 and A570/580. "G" designates a fiberglass carrier that is on one side of the material for ease of handling and installation. "A" specifies an aluminum foil carrier with a pressure sensitive adhesive for ease of placement on enclosure covers.

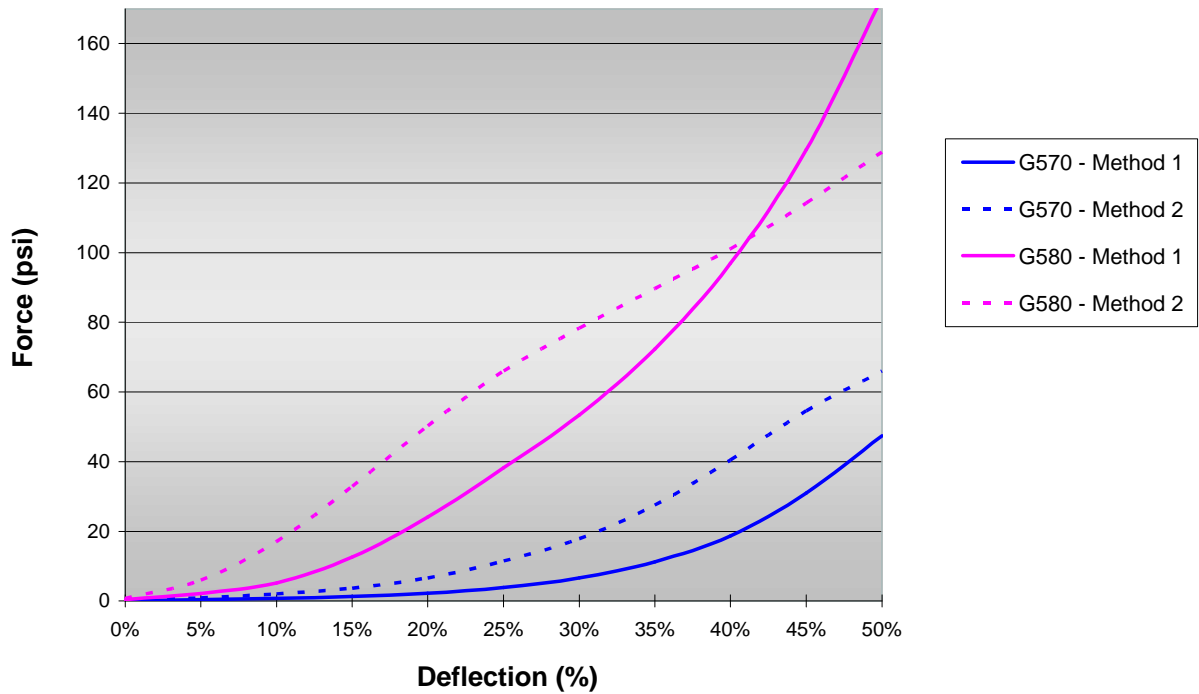
A full range of THERM-A-GAP products is available for optimum solutions to different application needs.



Typical Properties	THERM-A-GAP™ 570	THERM-A-GAP™ 580	Test Method
Color	Blue	Yellow	Visual
Carrier	G = Fiberglass A = Aluminum	G = Fiberglass A = Aluminum	---
Thickness, inch (mm)	0.020 (0.51) to 0.200 (5.1)	0.020 (0.51) to 0.200 (5.1)	ASTM D374
Specific Gravity	2.2	2.9	ASTM D792
Thermal Impedance, °C-in <sup>2</sup> /W @ 10 psi, 0.04 inch thick	1.5	0.7	ASTM D5470
Thermal Conductivity, W/m-K	1.2	2.5	ASTM D5470
Operating Temperature Range, °C	-50 to +200	-50 to +200	--
Hardness (Shore 00)	40	60	ASTM D2240
Force-Deflection Curve	See Graph	See Graph	---
Dielectric Strength (v/mil)	200	200	---
Volume Resistivity (Ohm-cm)	10 <sup>13</sup>	10 <sup>13</sup>	D257

March 10, 2005

**Force-Deflection Curve for 570 & 580 Therm-A-Gap (0.100" Thick)**



**TEST METHODS**

Rate of Force: 0.025 inch/minute

Method 1: Uses 1 inch square probe with 0.5 inch diameter circular sample, 0.100" thick

Method 2: Uses 0.75 inch diameter round probe with 0.75 inch diameter circular sample, 0.100" thick

**Ordering Information**

Both 570 and 580 materials are available in the following formats:

- Standard size flat sheets (18" x 18") See part number structure below.
- Custom die-cut parts
- Standard Thicknesses from 0.020" (0.51mm) to 0.200" (5.1mm). Custom thicknesses available. Contact Chomerics applications department for assistance

69 -	XX -	YYYY -	ZZZZ
	11 = w/out PSA 12 = w/ PSA	20698 = 20 mil thick 20684 = 40 mil thick 20685 = 70 mil thick 20672 = 100 mil thick 20675 = 130 mil thick 20686 = 160 mil thick 20687 = 200 mil thick	G570 = Fiberglass reinforced G580 = Fiberglass reinforced A570 = Aluminum carrier A580 = Aluminum carrier