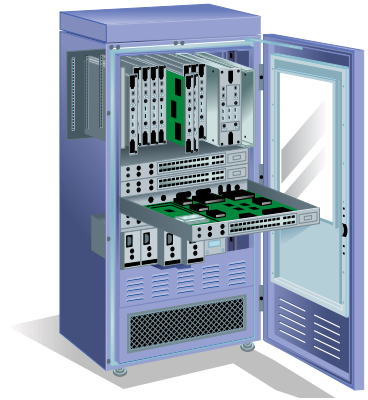


# CHO-SEAL® 6436

Conductive Elastomer EMI Gasket Material



## Customer Value Proposition:

CHO-SEAL® 6436 is an extrudable, conductive elastomer EMI gasket material. Comprised of silver-plated nickel-filled EPDM, 6436 was developed as a replacement material for Chomerics CHO-SEAL E6434E. This material offers equivalent EMI shielding (90dB) and NBC fluid resistance. Target applications for this material are those in which the fluid resistance properties of an EPDM elastomer are desired in addition to superior conductivity and shielding effectiveness.



## Contact Information:

Parker Hannifin Corporation  
**Chomerics Division**  
77 Dragon Court  
Woburn, MA 01801

phone 781 935 4850  
fax 781 933 4318  
chomailbox@parker.com

www.parker.com  
www.chomerics.com

## Product Features:

- High performance EMI shielding to 90dB
- EPDM based material offers superior resistance to NBC fluids

## Extrudable cross-sections are available as follows:

- Solid "O" up to .146" diameter
- Solid "D" up to .131" width and .131" height
- Rectangular up to .253" x .063"

# Product Information

**TABLE 1- QUALITY CONFORMANCE TESTS**

Property	Method	CHO-SEAL 6436
Conductive Filler	--	Silver-plated nickel
Elastomer Binder	--	EPDM
Volume Resistivity	MIL-DTL-83528	0.050 ohm-cm (max.)
Hardness	ASTM D2240	80 +/-7 Shore A
Tensile Strength	ASTM D412	200 psi (min.)
Tear Strength	ASTM D624	70 ppi (min.)
Elongation	ASTM D412	100 % (min.)
Specific Gravity	ASTM D792	3.80 +/- .25

**TABLE 2 - QUALIFICATION TESTS**

Property	Method	CHO-SEAL 6436
Compression Set	ASTM D395 Method B	40% (max.)
	70 hrs. @ 100°C	
Low Temperature Flex TR 10@	ASTM 1329	-40°C
Maximum Continuous Use Temperature	--	100°C
Heat Aging	MIL-DTL-83528	0.050 ohm-cm (max.)
	48 HRS. @ 100°C	
Shielding Effectiveness (min.)	MIL-DTL-83528	--
100 MHz	--	90 dB
500 MHz	--	90 dB
2 GHz	--	90 dB
10 GHz	--	90 dB

## Ordering Information

**Part Number:**



10 = Extrusion type  
19 = Extrusion type



14 = Round  
05 = D-shaped  
07 = Rectangular  
09 = Custom  
20 = PSA Tape applied  
23 = Kiss cut  
24 = 4-Corner spliced



YYYY = Cross section serial number (i.e., 1687)



6436 (Material type)