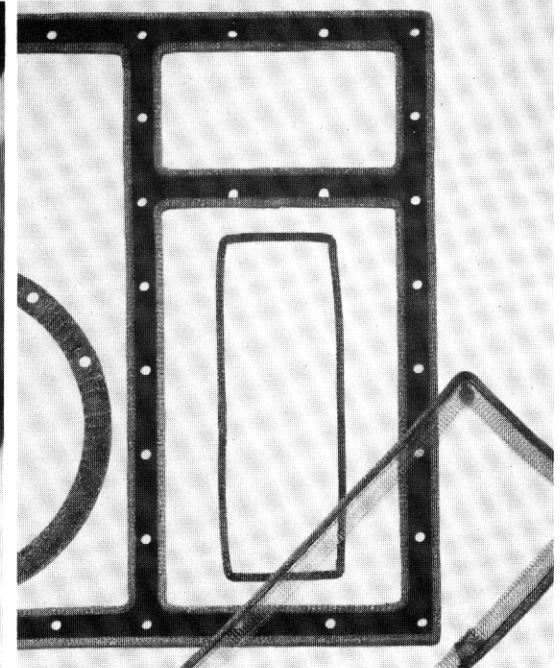
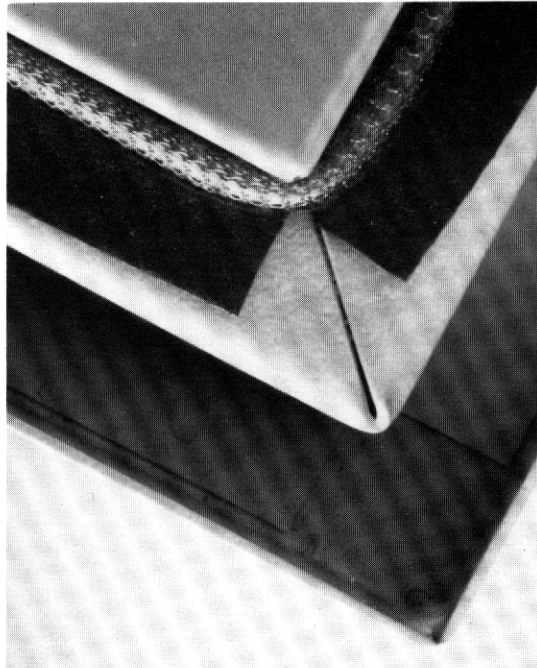


## COMBO® STRIP Gaskets

COMBO® STRIP gaskets combine knitted wire MESH™ STRIP in parallel with an elastomer weather-sealing strip. COMBO STRIP gaskets are available with or without adhesive backing in a broad range of standard cross-sections. Gasketing with MESH STRIPs on both sides of the elastomer is also available.

COMBO STRIP gasketing is recommended for applications requiring a weather seal in addition to EMI/EMP shielding. This type of gasketing is also useful in applications requiring shielding only and where the adhesive backing on the elastomer would provide a convenient means of mounting. To obtain a reliable shield and seal, both portions of the COMBO STRIP must be in contact with both mating surfaces. *(These gaskets should never be used in salt spray [shipboard] environments. Both Monel and Ferrex\* mesh will cause galvanic corrosion of aluminum flanges. Silver-plated-aluminum filled elastomer gaskets are recommended on aluminum flanges in salt spray environments.)*



For applications in which over-compression might cause deterioration of the elastomer seal, metal compression stops may be incorporated within the elastomer portion of the gasket.

The standard EMI/EMP portion of COMBO gasketing is Monel or Ferrex wire, although other metals and alloys (such as aluminum wire) are available. The standard elastomers are neoprene or silicone sponge, or solid silicone. Other elastomers, such as fluorosilicones, may be substituted.

For high deflection applications with low closure force, COMBO gaskets with sponge elastomers are recommended. Mesh over core, in conjunction with a sponge elastomer, can further improve low closure force capabilities.

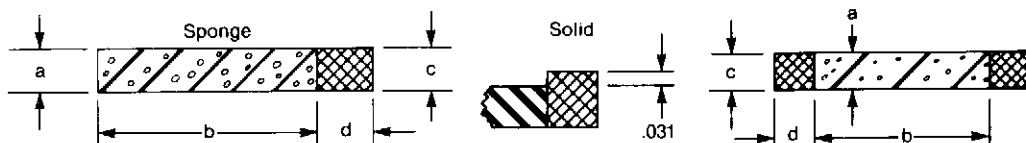
For applications requiring less compressibility, solid elastomers are preferred. **Note:** Sponge elastomers exhibit high compression set, and are therefore not recommended for long-term sealing, especially where repeated opening/closing cycles are expected.

### ADHESIVE BACKING

A high-tack, long-shelf-life acrylic pressure-sensitive adhesive is available as an option on both neoprene and silicone elastomers. On neoprene sponge, a "dry-back" adhesive is also available. This self-contained adhesive is activated by a solution of toluene and isopropyl alcohol. Once dry, the bond has a tear resistance superior to that of the elastomer.

\* Ferrex® is Chomerics' tin-plated, copper-clad steel wire per ASTM B-520 ASTM (MIL-W-3861), tin-plate, 2-3% by weight; ASTM B-227 copper-cladding 30-40% by weight; SAE 1010 steel wire balance by weight.

# COMBO® STRIP GASKETS



When using "solid" elastomer, mesh is normally 0.031in. (0.79mm) higher because mesh compresses easier than solid elastomer under same pressure.

TABLE 1

## COMBO STRIP GASKETS

Dimensions, inch (mm)				Part Number			
a	b	c	d	Neoprene Sponge		Silicone Sponge	
				Monel	Ferrex®	Monel	Ferrex®
0.062 (1.57)	0.250 (6.35)	0.062 (1.57)	0.125 (3.18)	01-0201-1756	01-0204-1756	01-0301-1772	01-0304-1772
0.062 (1.57)	0.375 (9.53)	0.062 (1.57)	0.125 (3.18)	01-0201-1757	01-0204-1757	01-0301-1773	01-0304-1773
0.062 (1.57)	0.500 (12.70)	0.062 (1.57)	0.125 (3.18)	01-0201-1692	01-0204-1692	01-0301-1774	01-0304-1774
0.062 (1.57)	0.625 (15.88)	0.062 (1.57)	0.125 (3.18)	01-0201-1739	01-0204-1739	01-0301-1775	01-0304-1775
0.093 (2.36)	0.250 (6.35)	0.093 (2.36)	0.125 (3.18)	01-0201-1344	01-0204-1344	01-0301-1776	01-0304-1776
0.093 (2.36)	0.375 (9.53)	0.093 (2.36)	0.125 (3.18)	01-0201-1332	01-0204-1332	01-0301-1777	01-0304-1777
0.093 (2.36)	0.500 (12.70)	0.093 (2.36)	0.125 (3.18)	01-0201-1758	01-0204-1758	01-0301-1778	01-0304-1778
0.093 (2.36)	0.750 (19.05)	0.093 (2.36)	0.125 (3.18)	01-0201-1333	01-0204-1333	01-0301-1779	01-0304-1779
0.125 (3.18)	0.125 (3.18)	0.125 (3.18)	0.125 (3.18)	01-0201-1138	01-0204-1138	01-0301-1780	01-0304-1780
0.125 (3.18)	0.188 (4.78)	0.125 (3.18)	0.125 (3.18)	01-0201-1136	01-0204-1136	01-0301-1781	01-0304-1781
0.125 (3.18)	0.250 (6.35)	0.125 (3.18)	0.125 (3.18)	01-0201-1135	01-0204-1135	01-0301-1782	01-0304-1782
0.125 (3.18)	0.250 (6.35)	0.125 (3.18)	0.250 (6.35)	01-0201-1130	01-0204-1130	01-0301-1783	01-0304-1783
0.125 (3.18)	0.375 (9.53)	0.125 (3.18)	0.125 (3.18)	01-0201-1132	01-0204-1132	01-0301-1784	01-0304-1784
0.125 (3.18)	0.500 (12.70)	0.125 (3.18)	0.125 (3.18)	01-0201-1134	01-0204-1134	01-0301-1785	01-0304-1785
0.125 (3.18)	0.500 (12.70)	0.125 (3.18)	0.250 (6.35)	01-0201-1131	01-0204-1131	01-0301-1786	01-0304-1786
0.125 (3.18)	0.500 (12.70)	0.125 (3.18)	0.500 (12.70)	01-0201-1133	01-0204-1133	01-0301-1787	01-0304-1787
0.125 (3.18)	0.625 (15.88)	0.125 (3.18)	0.125 (3.18)	01-0201-1055	01-0204-1055	01-0301-1788	01-0304-1788
0.125 (3.18)	0.750 (19.05)	0.125 (3.18)	0.125 (3.18)	01-0201-1759	01-0204-1759	01-0301-1789	01-0304-1789
0.188 (4.78)	0.188 (4.78)	0.188 (4.78)	0.125 (3.18)	01-0201-1760	01-0204-1760	01-0301-1790	01-0304-1790
0.188 (4.78)	0.250 (6.35)	0.156 (3.96)	0.125 (3.18)	01-0201-1056	01-0204-1056	01-0301-1515	01-0304-1515
0.188 (4.78)	0.250 (6.35)	0.188 (4.78)	0.125 (3.18)	01-0201-1622	01-0204-1622	01-0301-1791	01-0304-1791
0.188 (4.78)	0.375 (9.53)	0.188 (4.78)	0.125 (3.18)	01-0201-1761	01-0204-1761	01-0301-1792	01-0304-1792
0.188 (4.78)	0.500 (12.70)	0.188 (4.78)	0.125 (3.18)	01-0201-1762	01-0204-1762	01-0301-1793	01-0304-1793
0.188 (4.78)	0.750 (19.05)	0.188 (4.78)	0.250 (6.35)	01-0201-1763	01-0204-1763	01-0301-1794	01-0304-1794
0.250 (6.35)	0.250 (6.35)	0.250 (6.35)	0.125 (3.18)	01-0201-1764	01-0204-1764	01-0301-1795	01-0304-1795
0.250 (6.35)	0.500 (12.70)	0.250 (6.35)	0.125 (3.18)	01-0201-1766	01-0204-1766	01-0301-1797	01-0304-1797
0.250 (6.35)	0.750 (19.05)	0.250 (6.35)	0.125 (3.18)	01-0201-1767	01-0204-1767	01-0301-1798	01-0304-1798
0.375 (9.53)	0.250 (6.35)	0.375 (9.53)	0.125 (3.18)	01-0201-0817	01-0204-0817	01-0301-1800	01-0304-1800
0.375 (9.53)	0.500 (12.70)	0.375 (9.53)	0.250 (6.35)	01-0201-1768	01-0204-1768	01-0301-1801	01-0304-1801
0.375 (9.53)	0.750 (19.05)	0.375 (9.53)	0.250 (6.35)	01-0201-1769	01-0204-1769	01-0301-1802	01-0304-1802

For adhesive backing: change 02 to 06 (pressure-sensitive)\*, or from 02 to 11 ("dry-back"); change 03 to 07 (pressure-sensitive only).

**ALSO AVAILABLE WITH SOLID NEOPRENE OR SOLID SILICONE, PLEASE INQUIRE.**

\*Not available on 01-0201-1138, 01-0204-1138, 01-0301-1780, 01-0304-1780.

TABLE 2

## COMBO-2™ STRIP GASKETS

Dimensions, inch (mm)				Part Number			
a	b	c	d	Neoprene Sponge		Silicone Sponge	
				Monel	Ferrex	Monel	Ferrex
0.125 (3.18)	0.250 (6.35)	0.125 (3.18)	0.125 (3.18)	01-0201-1765	01-0204-1765	01-0301-1796	01-0304-1796
0.125 (3.18)	0.375 (9.53)	0.125 (3.18)	0.125 (3.18)	01-0201-1770	01-0204-1770	01-0301-1799	01-0304-1799
0.125 (3.18)	0.500 (12.70)	0.125 (3.18)	0.125 (3.18)	01-0201-1771	01-0204-1771	01-0301-1803	01-0304-1803
0.125 (3.18)	0.250 (6.35)	0.156 (3.96)	0.125 (3.18)	01-0201-1804	01-0204-1804	01-0301-1805	01-0304-1805
0.125 (3.18)	0.375 (9.53)	0.156 (3.96)	0.125 (3.18)	01-0201-1681	01-0204-1681	01-0301-1806	01-0304-1806
0.125 (3.18)	0.500 (12.70)	0.156 (3.96)	0.125 (3.18)	01-0201-1807	01-0204-1807	01-0301-1810	01-0304-1810
0.188 (4.78)	0.250 (6.35)	0.188 (4.78)	0.125 (3.18)	01-0201-1808	01-0204-1808	01-0301-1811	01-0304-1811
0.188 (4.78)	0.500 (12.70)	0.188 (4.78)	0.125 (3.18)	01-0201-1809	01-0204-1809	01-0301-1812	01-0304-1812

For adhesive backing: change 02 to 06 (pressure-sensitive).

For adhesive backing: change 03 to 07 (pressure-sensitive only).

### COMBO® STRIP TOLERANCES

Dimensions, inch (mm)	Solid Elastomer	Closed Cell
<b>a</b> Up to and including 0.125 (3.18)	±0.015 (0.38)	+0.032 (0.81) 0.016 (0.41)
<b>a</b> 0.125 to 0.5 (3.18 to 12.7)	+0.015 (0.38)	±0.063 (1.60)
<b>a</b> Over 0.5 (12.7)	±0.015 (0.38)	±0.094 (2.39)
<b>b</b> Up to 1.00 (25.4)	±0.031 (0.78)	±0.031 (0.78)
<b>c</b>	0.062 to 0.188	+0.015 (1.57 to 4.78) 0.000 (-0.00) +0.38
<b>d</b>	0.188 to 0.375	+0.031 (4.78 to 9.53) -0.000 (-0.00) +0.78

ALSO AVAILABLE WITH SOLID NEOPRENE OR SOLID SILICONE, PLEASE INQUIRE.

### How to Order Fabricated Combo Gaskets

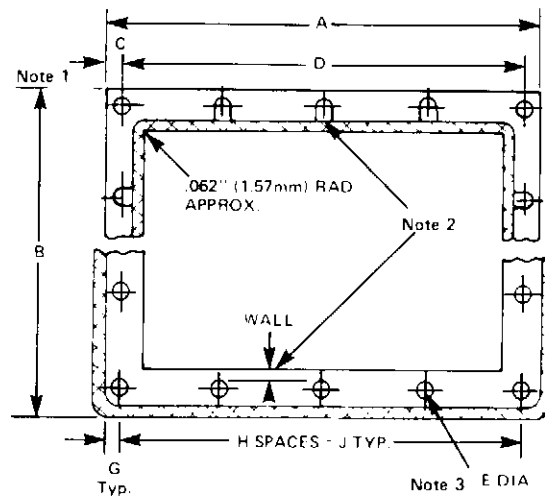
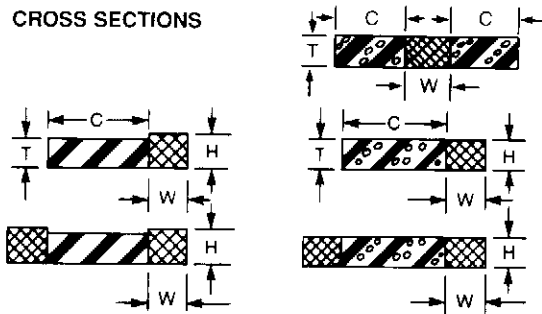
### COMBO® GASKET TOLERANCES

Dimensions, inch (mm)	Solid Elastomer	Closed Cell
A, B, C, & D min. for each 5in. (127mm) of length	±0.015 (0.38) ±0.015 (0.38)	+0.031 (0.78) ±0.031 (0.78)
G & J min. for each 5in. (127mm) of length	±0.015 (0.38) ±0.015 (0.38)	±0.015 (0.38) ±0.015 (0.38)
T, under 0.125 (3.18)	±0.015 (0.38)	±0.016 (0.41)
T, 0.125 to 0.5 (3.18 to 12.7)	±0.031 (0.78)	±0.063 (1.60)
T, over 0.5 (12.7)	±0.031 (0.78)	±0.094 (2.39)
W & H	0.062 to 0.188	+0.015 (1.57 to 4.78) -0.000 (-0.00) +0.38
	0.188 to 0.375	+0.031 (4.78 to 9.3) -0.000 (-0.00) +0.78

#### Notes:

1. Minimum width of elastomer portion is the greater of 0.125 in. (3.18mm) or elastomer thickness.
2. Minimum wall thickness should equal elastomer thickness. "U" slots should be used if minimum wall requirement cannot be met.
3. Hole diameter should be equal to or greater than elastomer thickness.

#### CROSS SECTIONS

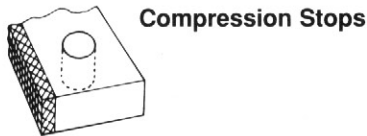


**COMPRESSION AND CLOSURE CHARACTERISTICS**

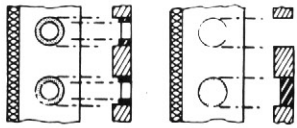
For COMBO gasketing with solid elastomer core, the wire mesh is normally 0.031" (0.79mm) higher than the elastomer to assure adequate compression of the mesh. In general, solid elastomer closure pressure is in the 25 to 100 psi (1.7 to 7.0 kg/cm<sup>2</sup>) range. For moderate EMI shielding, and when sponge elastomer is used for limited environmental sealing, pressure as low as 10 psi (0.7 kg/cm<sup>2</sup>) is adequate.

For applications in which sponge elastomer is required, over-compression at the bolt holes can be avoided by bonding washer-type metal compression stops within the seal.

To avoid over-compression in applications where the total high-pressure force is concentrated on the cover gasket, solid metal stops can be bonded into the gasket between bolt holes. The two types of compression stops are illustrated here.



**Compression Stops**



Washer type      Solid metal

**ORDERING PROCEDURE**

**Standard COMBO STRIP Gasketing:**

Usually supplied and shipped in rolls.

Order by part numbers from Tables 1 and 2. If no listed part is suitable, specify desired cross-section, elastomer material, and EMI mesh material. Note the following size ranges:

**Mesh dimensions**

min. (c) = .062 (1.57)

(d) = .125 (3.18)

max. (c) = .375 (9.53)

(d) = 1.00 (25.4)

**Elastomer dimensions**

min. (a) = 0.62 (1.57)

(b) = .125 (3.18)

max. (a) = .375 (9.53)

(b) = 1.00 (25.4)

For solid elastomers, the mesh material is normally .031 inch (0.79mm) thicker than the elastomer.

For adhesive backing on the elastomer, change part number as follows:

Adhesive	Change:	To:
Pressure-sensitive acrylic	-0201-	-0601-
	-0204-	-0604-
	-0301-	-0701-
	-0304-	-0704-
"Dry-back"†	-0201-	-1101-
	-0404-	-1104-

†Available on neoprene sponge only. See details on previous page.

**Fabricated COMBO Gaskets:**

Select the appropriate elastomer and wire mesh material, and determine gasket thickness and width. Determine need and type of compression stop. Prepare and submit a drawing of specifications, dimensions, and tolerances to Chomerics' Sales Department.

**COMPRESSION STOP TOLERANCES**

Thickness* inch (mm)	Aluminum	Stainless Steel
0.040-0.072 (1.02-1.83)	±0.004 (0.10)	±0.006 (0.15)
0.072-0.098 (1.83-2.49)	±0.006 (0.15)	±0.008 (0.20)
0.098-0.130 (2.49-3.30)	±0.008 (0.20)	±0.010 (0.25)
0.130-0.150 (3.30-3.81)	±0.010 (0.25)	±0.012 (0.30)

\*Choose standard-gauge sheet material only.

**CHOMERICS**

**Parker** Seals

Chomerics, Inc.  
77 Dragon Court  
Woburn, MA 01888-4014  
Tel: 617-935-4850  
FAX: 617-933-4318



Chomerics Europe Ltd., Parkway, Globe Park  
Marlow, Bucks., SL7 1YB, England  
Tel: (0628) 486030 FAX: (0628) 890053  
France Freephone Tel: (0590) 8170  
Germany Freephone Tel: (0130) 818074



**NOTICE:** The information contained herein is to the best of our knowledge true and accurate. However, since the varied conditions of potential use are beyond our control, all recommendations or suggestions are presented without guarantee or responsibility on our part and users should make their own tests to determine the suitability of our products in any specific situation. **This product is sold without warranty either expressed or implied, of fitness for a particular purpose or otherwise, except that this product shall be of standard quality, and except to the extent otherwise stated on Chomerics' invoice, quotation, or order acknowledgement.** We disclaim any and all liability incurred in connection with the use of information contained herein, or otherwise. All risks of such are assumed by the user. Furthermore, nothing contained herein shall be construed as a recommendation to use any process or to manufacture or to use any product in conflict with existing or future patents covering any product or material or its use.

