

## Parker H-Seal™

Retained drop-in-place molded seals

No. ESD 5602-USA

### Greater seal pressure with redundant sealing beads and retention capabilities.

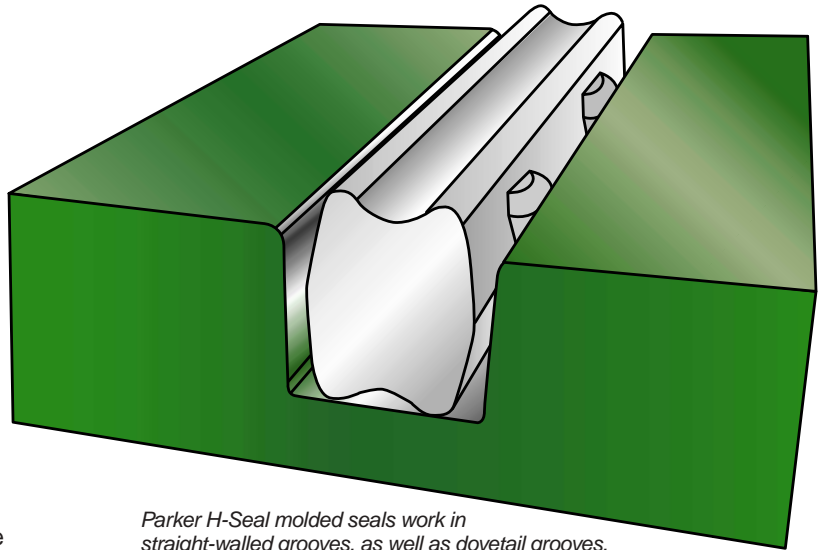
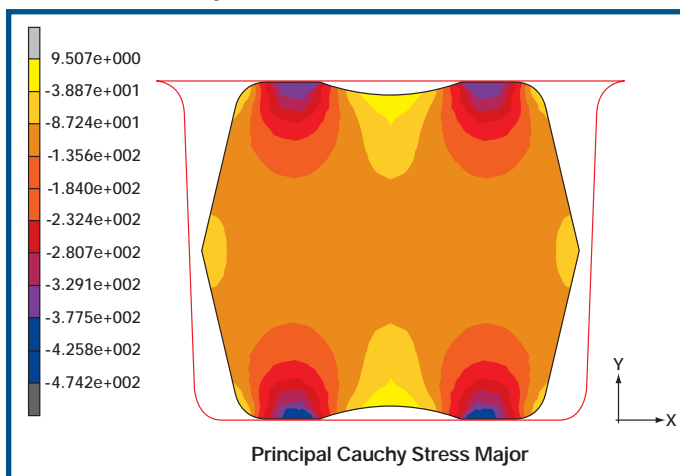
Parker H-Seal™ molded seals can be used in molded or machined grooves for face seal applications. They will fit traditional dovetail grooves or straight-walled grooves. If desired, Parker H-Seal molded seals can be self-retaining with the addition of retention ribs. The redundant sealing beads offer stability and resistance to twisting, which is particularly important with large profile seals. The small contact points of Parker H-Seal molded seals generate high seal pressures, making them particularly effective when mating surfaces are less than perfect.

The Parker H-Seal cross section can be used in a round profile or in custom-designed manifold systems. Parker H-Seal cross sections can be refined to meet the specific seal load and/or system pressure requirements that your application demands.

#### Applications

- Cover seals
- Manifold seals
- Perimeter seals
- Face seals with low to high system pressures

#### Tensile and Compressive Stresses



Parker H-Seal molded seals work in straight-walled grooves, as well as dovetail grooves.

#### Features and Benefits

- **High sealing pressures** for less micro-leakage (often mistaken as permeation) and better sealing properties with non-ideal mating surfaces.
- **Application-specific seal loads** can be achieved by adjusting the cross-sectional geometry and/or material selection.
- **Seal retention** is achieved through the use of “press-in-place” design technology in straight-walled or dovetail grooves.
- **Easily installed and removed** for rapid assembly.

To realize the many advantages of Parker H-Seal molded seals, call (574) 528-9400 or visit [www.parker.com/esd](http://www.parker.com/esd) before the gland is engineered. A Parker application engineer will be able to recommend an optimum groove geometry or design a customized seal to fit your existing application.