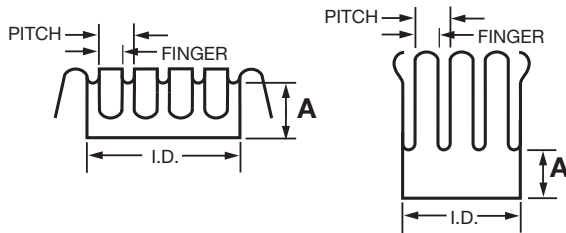


**CONTACT RINGS**

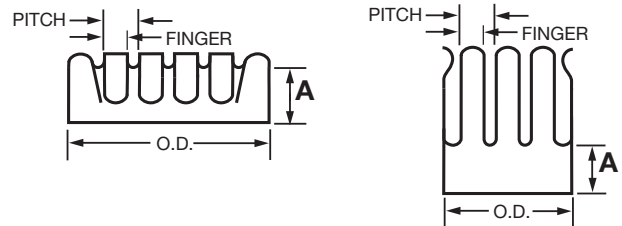
Contact rings are available in any inner diameter (I.D.) for male ring configurations. Female ring configurations are available in any outer diameter (O.D.) greater than the minimum O.D. shown. Rings must contain an integral number of full fingers. Additional plating options upon request.

Material: Beryllium Copper per ASTM B194 UNS C17200

**MALE RINGS**

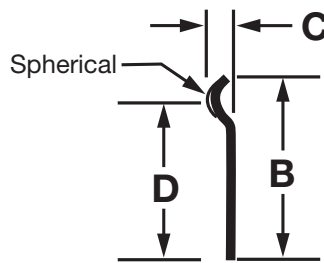
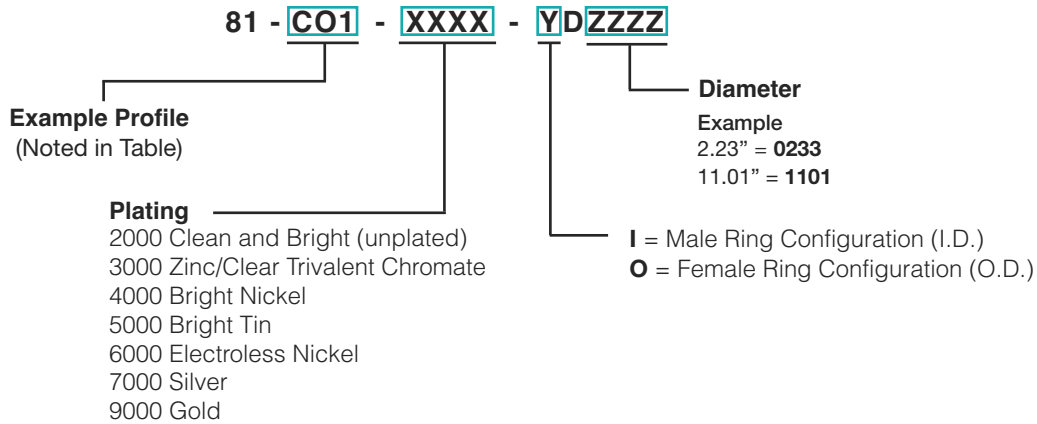


**FEMALE RINGS**



See Table Below for Dimensions

**Part Numbering System**



Chomerics P/N	Finger	Pitch	A	B	C	D	Minimum O.D. (Female Rings)	Material Thickness
81-C01-XXXX-YDZZZZ	0.040 (1.02)	0.060 (1.52)	0.12 (3.05)	0.34 (8.64)	0.04 (1.02)	0.30* (7.62)	0.173 (4.39)	0.004 (0.102)
81-C02-XXXX-YDZZZZ	0.050 (1.27)	0.075 (1.91)	0.06 (1.52)	0.38 (9.65)	0.05 (1.27)	0.31* (7.87)	0.197 (5.00)	0.006 (0.152)
81-C03-XXXX-YDZZZZ	0.050 (1.27)	0.075 (1.91)	0.22 (5.59)	0.53 (13.46)	0.05 (1.27)	0.47* (11.94)	0.197 (5.00)	0.006 (0.152)
81-C04-XXXX-YDZZZZ	0.140 (3.56)	0.187 (4.75)	0.50 (12.7)	0.75 (19.05)	0.12 (3.05)	0.65* (16.51)	0.900 (22.86)	0.005 (0.127)

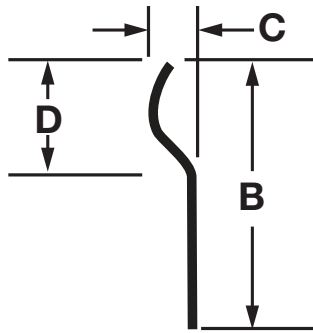
\*reference only dimensions

(mm dimensions in parentheses)

All dimensions are nominal. For applications where tolerances are critical, contact Chomerics' Applications Engineering Dept.

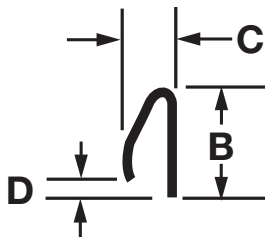
**Additional profiles are available. Request information.**

**CONTACT RINGS**



Chomerics P/N	Finger	Pitch	A	B	C	D	Minimum O.D. (Female Rings)	Material Thickness
81-C05-XXXX-YDZZZZ	0.140 (3.56)	0.187 (4.75)	0.65* (16.51)	0.89 (22.61)	0.09 (2.29)	0.27 (6.86)	0.007 (17.78)	0.005 (0.127)
81-C06-XXXX-YDZZZZ	0.140 (3.56)	0.187 (4.75)	0.65* (16.51)	0.89 (22.61)	0.12 (3.05)	0.30 (7.62)	0.007 (17.78)	0.005 (0.127)

\*reference only dimensions



Chomerics P/N	Finger	Pitch	A	B	C	D	Minimum O.D. (Female Rings)	Material Thickness
81-C07-XXXX-YDZZZZ	0.040 (1.02)	0.060 (1.52)	0.13* (3.30)	0.13 (3.30)	0.07 (1.78)	0.03 (0.76)	0.630 (16.00)	0.004 (0.102)
81-C08-XXXX-YDZZZZ	0.077 (1.96)	0.127 (3.23)	0.09* (2.29)	0.13 (3.30)	0.09 (2.29)	0.03 (0.76)	0.649 (16.48)	0.005 (0.127)
81-C09-XXXX-YDZZZZ	0.091 (2.31)	0.134 (3.40)	0.23* (5.84)	0.28 (7.11)	0.13 (3.30)	0.03 (0.76)	0.700 (17.78)	0.010 (0.254)
81-C10-XXXX-YDZZZZ	0.109 (2.77)	0.145 (3.68)	0.23* (5.84)	0.28 (7.11)	0.13 (3.30)	0.03 (0.76)	—	0.010 (0.254)
81-C11-XXXX-YDZZZZ	0.091 (2.31)	0.134 (3.40)	0.23* (5.84)	0.28 (7.11)	0.20 (5.08)	0.09 (2.29)	—	0.010 (0.254)
81-C11-XXXX-YDZZZZSF	0.091 (2.31)	0.134 (3.40)	0.23* (5.84)	0.28 (7.11)	0.20 (5.08)	0.09 (2.29)	—	0.005 (0.127)
81-C12-XXXX-YDZZZZ	0.125 (3.18)	0.187 (4.75)	0.38 (9.65)*	0.48 (12.19)	0.28 (7.11)	0.13 (3.30)	—	0.006 (0.152)
81-C13-XXXX-YDZZZZ	0.087 (2.21)	0.134 (3.40)	0.50* (12.70)	0.63 (16.00)	0.44 (11.18)	0.22 (5.59)	—	0.010 (0.254)

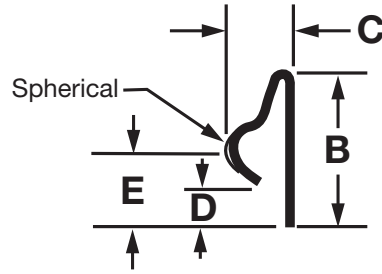
\*reference only dimensions

All dimensions are nominal. For applications where tolerances are critical, contact Chomerics' Applications Engineering Dept.

(mm dimensions in parentheses)

**Additional profiles are available. Request information.**

**CONTACT RINGS**



Chomerics P/N	Finger	Pitch	A	B	C	D	E	Minimum O.D. (Female Rings)	Material Thickness
81-C014-XXXX-YDZZZZ	0.040 (1.02)	0.060 (1.52)	0.13* (3.30)	0.19 (4.83)	0.09 (2.29)	0.03 (0.76)	0.10* (2.54)	0.500 (12.70)	0.004 (0.102)
81-C015-XXXX-YDZZZZ	0.050 (1.27)	0.075 (1.94)	0.20* (5.08)	0.26 (6.60)	0.11 (2.79)	0.03 (2.76)	0.10* (2.54)	0.630 (16.00)	0.006 (0.152)
81-C016-XXXX-YDZZZZ	0.062 (1.57)	0.093 (2.36)	0.31* (7.87)	0.44 (11.18)	0.16 (4.06)	0.12 (3.05)	0.23* (5.84)	0.975 (24.77)	0.010 (0.254)

\*reference only dimensions

NOTE: All specifications current as of 09/24/2008, Rev. 1

All dimensions are nominal. For applications where tolerances are critical, contact Chomerics' Applications Engineering Dept.

(mm dimensions in parentheses)

**Additional profiles are available. Request information.**



US Headquarters TEL +(1) 781-935-4850 FAX +(1) 781-933-4318 • [www.chomerics.com](http://www.chomerics.com)  
 Europe TEL +(44) 1628 404000 FAX +(44) 1628 404090  
 Asia Pacific TEL +(852) 2 428 8008 FAX +(852) 2 423 8253  
 South America TEL +(55) 11 3917 1099 FAX +(55) 11 3917 0817

