

TechSeal's custom engineered drive belts and lathe-cuts meet the stringent requirements of the floor care industry

Applications: Vacuum sweepers, shampooers/extractors, polishers, steamers, hand vacs, and any floor care application requiring seals, drive belts or mechanical rubber components.

Design Requirements: Rubber components for floor care equipment applications must be designed to meet stringent retention, heat resistance and durability requirements at minimum cost. These products must also be capable of providing prolonged service in demanding environments, where dirt, dust and other abrasive matter is commonplace.

The TechSeal Solution: Precision-engineered rubber components designed specifically for the floor care industry. Parker Hannifin's TechSeal Division offers an unparalleled range of flat, round and cogged belts, along with a wide selection of lathe cuts, extruded/spliced seals, isolators and insulators. These products are manufactured using premium rubber formulations, and their performance is evaluated through life stand testing and advanced finite element analysis (FEA) computer simulation.

In addition to its manufacturing capabilities, TechSeal offers floor care equipment manufacturers the benefits of in-house applications engineering assistance and fast prototyping. The breadth of TechSeal's extruded, precision-cut and fabricated rubber product line enables manufacturers to consolidate suppliers, reduce costs and increase speed to market.

Products Offered:

- Flat Drive Belts
- Round Drive Belts
- Cogged Drive Belts
- Lathe-Cut Seals
- Extruded Spliced Seals
- Isolators / Insulators



Typical floor care products include drive belts and lathe-cut seals.

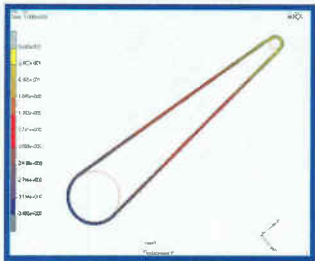
Key Features, Advantages, Benefits:

- Material technology (proprietary drive belt formulations, HNBR, FKM, FVQM, NBR, CR, EPDM) UL listed components available
- Application engineering assistance specializing in floor care applications for a custom solution
- Low-closure force (hollow o-rings)
- Finite Element Analysis (FEA)
- In-house product life-test and simulation facilities
- Prototyping and production samples
- High volume manufacturing processes
- Many belt and seal configurations available without tooling cost
- Printing, marking, subassembly and packaging services
- ISO-9001 certified facilities

More Than Manufacturing

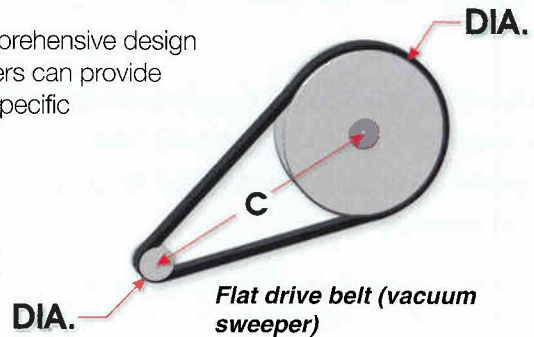
Design Assistance and Support

Quality products are one important part of the TechSeal solution. Comprehensive design assistance is the other. The division's experienced applications engineers can provide customers with both design and material selection options based on specific application requirements.



Once design is complete, TechSeal has the resources to quickly prototype, test and validate the product, providing an accurate assessment of long-term product life and performance characteristics.

Finite Element Analysis (FEA) simulating belt tension.



Flat drive belt (vacuum sweeper)

Through its extensive experience and testing, Parker's TechSeal Division has developed an entire family of rubber compounds for drive belt applications. These compounds set the standard for exceptional durability and long service life.

Compound	Recommended For	Heat Resistance	Retention	Cost Impact
G2448	Low amperage applications or applications where the belt is not in close proximity to the driver motor	Moderate to Good	Good to Excellent	Value
G2608	High amperage applications; our most popular belt compound	Moderate to Good	Good to Excellent	Moderate
C4100	High heat applications or applications where long burn-through is critical!	Good to Excellent	Moderate to Good	Premium
C4110	Service packaged applications where cost and low off-gassing are critical	Moderate to Good	Moderate to Good	Value

Your Authorized Parker TechSeal Sales Representative

R.S. Byrnes Associates, Inc.
 6211 Carmel Road, Suit 101
 Charlotte, NC 28226
 Phone: (704) 544-1616
 Fax: (704) 544-1717