

SPRING-LINE® D-Connector Gaskets

SPRING-LINE D-Connector Gaskets

Chomerics' SPRING-LINE D-connector gaskets answer most shielding and grounding needs for standard connector interfaces. The gaskets are available in both high performance beryllium-copper and economical stainless steel. D-connector gaskets offer excellent EMI protection by ensuring that maximum surface contact is achieved via independent fingers. This will lower closure force while improving conformance to surface irregularities.

Table 1 lists all standard gasket configurations available for 9-, 15-, 25-, 37- and 50-pin connectors. Each connector standard is available with two *cut out* configurations (dimensions A and E, see Table 1).

Table 1

XXXX	Material	A	B	C	D	E	F	G
09A1	SS	0.44 (11.18)	0.78 (19.81)	0.98 (24.89)	1.41 (35.81)	0.22 (5.59)	0.69 (17.53)	0.16 (4.06)
09A2	SS	0.35 (8.89)	0.78 (19.81)	0.98 (24.89)	1.41 (35.81)	0.18 (4.57)	0.69 (17.53)	0.16 (4.06)
09B1	BeCu	0.44 (11.18)	0.78 (19.81)	0.98 (24.89)	1.41 (35.81)	0.22 (5.59)	0.69 (17.53)	0.16 (4.06)
09B2	BeCu	0.35 (8.89)	0.78 (19.81)	0.98 (24.89)	1.41 (35.81)	0.18 (4.57)	0.69 (17.53)	0.16 (4.06)
15A1	SS	0.44 (11.18)	1.11 (28.19)	1.31 (33.27)	1.74 (44.20)	0.22 (5.59)	0.69 (17.53)	0.16 (4.06)
15A2	SS	0.35 (8.89)	1.11 (28.19)	1.31 (33.27)	1.74 (44.20)	0.18 (4.57)	0.69 (17.53)	0.16 (4.06)
15B1	BeCu	0.44 (11.18)	1.11 (28.19)	1.31 (33.27)	1.74 (44.20)	0.22 (5.59)	0.69 (17.53)	0.16 (4.06)
15B2	BeCu	0.35 (8.89)	1.11 (28.19)	1.31 (33.27)	1.74 (44.20)	0.18 (4.57)	0.69 (17.53)	0.16 (4.06)
25A1	SS	0.44 (11.18)	1.65 (41.91)	1.85 (46.99)	2.28 (57.91)	0.22 (5.59)	0.69 (17.53)	0.16 (4.06)
25A2	SS	0.35 (8.89)	1.65 (41.91)	1.85 (46.99)	2.28 (57.91)	0.18 (4.57)	0.69 (17.53)	0.16 (4.06)
25B1	BeCu	0.44 (11.18)	1.65 (41.91)	1.85 (46.99)	2.28 (57.91)	0.22 (5.59)	0.69 (17.53)	0.16 (4.06)
25B2	BeCu	0.35 (8.89)	1.65 (41.91)	1.85 (46.99)	2.28 (57.91)	0.18 (4.57)	0.69 (17.53)	0.16 (4.06)
37A1	SS	0.44 (11.18)	2.29 (58.17)	2.50 (63.50)	2.93 (74.42)	0.22 (5.59)	0.69 (17.53)	0.16 (4.06)
37A2	SS	0.35 (8.89)	2.29 (58.17)	2.50 (63.50)	2.93 (74.42)	0.18 (4.57)	0.69 (17.53)	0.16 (4.06)
37B1	BeCu	0.44 (11.18)	2.29 (58.17)	2.50 (63.50)	2.93 (74.42)	0.22 (5.59)	0.69 (17.53)	0.16 (4.06)
37B2	BeCu	0.35 (8.89)	2.29 (58.17)	2.50 (63.50)	2.93 (74.42)	0.18 (4.57)	0.69 (17.53)	0.16 (4.06)
50A1	SS	0.55 (13.97)	2.20 (55.88)	2.41 (61.21)	2.84 (72.14)	0.28 (7.11)	0.80 (20.32)	0.16 (4.06)
50A2	SS	0.45 (11.43)	2.20 (55.88)	2.41 (61.21)	2.84 (72.14)	0.23 (5.84)	0.80 (20.32)	0.16 (4.06)
50B1	BeCu	0.55 (13.97)	2.20 (55.88)	2.41 (61.21)	2.84 (72.14)	0.28 (7.11)	0.80 (20.32)	0.16 (4.06)
50B2	BeCu	0.45 (11.43)	2.20 (55.88)	2.41 (61.21)	2.84 (72.14)	0.23 (5.84)	0.80 (20.32)	0.16 (4.06)

***For additional plating options, please contact Chomerics Applications Engineering Dept.**

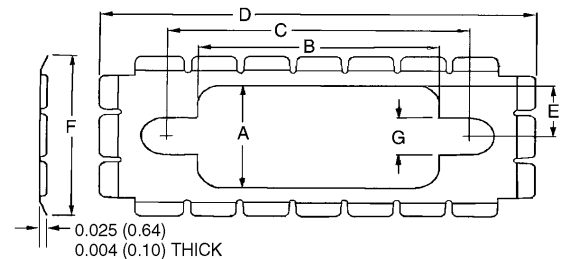
(mm dimensions in parentheses)



Table 2

MATERIAL PROPERTIES
Stainless Steel Alloy - 301/302 Hardness - 1/2H
Beryllium-Copper Alloy - 25 (172) Temper (1,000 psi) - 1/4HT

Figure 1



Ordering Procedure

Referring to Figure 1, use the following part number to order D-connector gaskets.

81 - D - XXXX - XXXX

Denotes D connector gasket

Number of pins in connector
09 - 9-pin
15 - 15-pin
25 - 25-pin
37 - 37-pin
50 - 50-pin

Finish*
2000=Clean & Bright (unplated)
4000=Bright Nickel
5000=Bright Tin

Connector Configuration (see Table 1)

Material type
A - Stainless Steel
B - Beryllium-Copper

SPRING-LINE Product