

ZIP-EX-2® Zippered Cable Shielding

ZIP-EX-2 Zippered Cable Shielding

ZIP-EX-2 cable shielding provides convenient, EMI and EMP shielding of cable harnesses for computers, communications equipment and other interference-sensitive electronic systems. It can be zipped on and off quickly, before or after the cable is installed.

The shielding medium is Ferrex® knitted wire mesh with a protective cover of heavy-duty vinyl, a combination that provides flexibility and durability as well as positive shielding. A brass slide fastener with rugged teeth crimped to a steel cord inside the knitted wire mesh provides continuous positive closure. ZIP-EX-2 shielding is also available with a Velcro® fastening mechanism. Contact Chomerics for details.

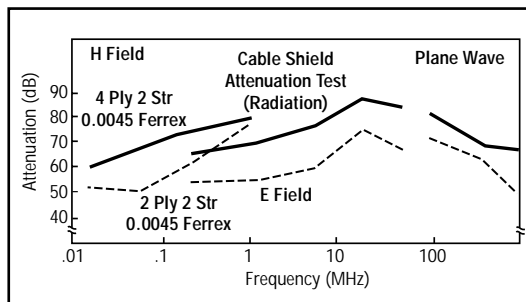
Configurations

ZIP-EX-2 shielding is supplied in nine diameters ranging from 1 to 5.75 inches (2.54 to 14.61 cm). The shielding mesh may be obtained either with or without the black vinyl jacket described above.

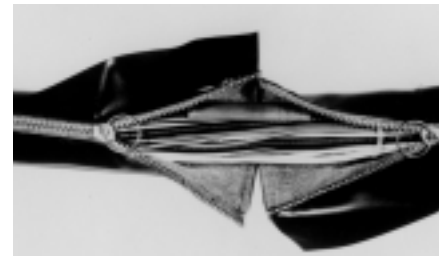
Straight lengths up to 40 feet (12.19 m) are available, as well as transition components ("Y" and reducer) and bulkhead terminations. Transition components may be specified with two diameters, A and B, (see Figure 2). Diameter A is always the larger of the two.

Straight lengths may be ordered with the ends "finished" (zipper terminations at both ends) or unfinished (see Table 1). Transition components (Figure 2) are supplied with finished ends.

Figure 1 Cable Shielding Effectiveness



*Ferrex® is Chomerics' tin-plated, copper-clad steel wire per ASTM B-520 ASTM (QQ-W-343) tin-plate, 2-3% by weight; ASTM B-227 coppercladding, 30-40% by weight; SAE 1010 steel wire, balance by weight.

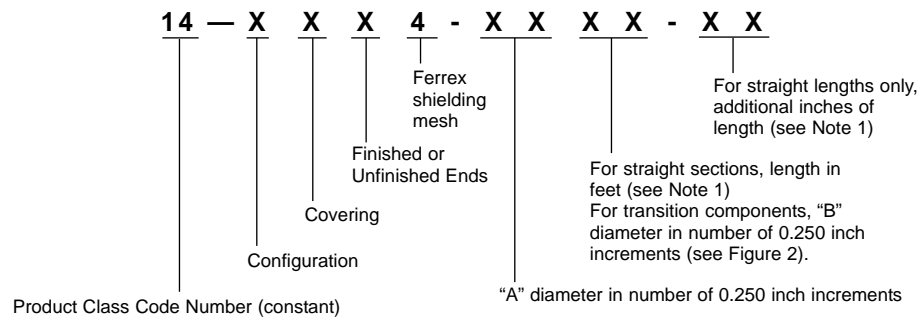


Ordering Information

Complete descriptive part numbers should be developed in accordance with the instructions that follow. Important Note: To specify diameter in the part number, indicate in the appropriate place the total number of 0.250 in. (6.35 mm) increments in the diameter, not the actual diameter (see Table 1).

Part numbers for split couplers and terminations are given in Tables 3 and 5.

Part numbers for straight lengths, Y transitions and reducers are established as follows:



Note 1: Lengths must be shown as the number of complete feet and the number of additional inches. **Wrong:** 52 inches. **Right:** 4 feet 4 inches with the last four digits reading -04-04. Metric dimensions must be converted to feet and inches.

Table 1

Configuration	Covering	Ends
1 straight length	0 none	0 unfinished
2 reducer	1 black vinyl	1 finished
5 Y		
Diameters A and B		
Indicate total number of 0.250 inch increments for each diameter. (Metric values must be converted.)		
Examples		
For 1 inch (25.4 mm) dia., use 04		
For 2.5 inch (63.5 mm) dia., use 10		
For 4 inch (101.6 mm) dia., use 16		

Sample Part Numbers

14-1114-0432-06 — a straight length with black vinyl cover and finished ends, Ferrex shielding material, 1.0 inch (25.4 mm) dia., 32 feet 6 inches (9.9 m) long.

14-2114-12-08 — a reducer with black vinyl cover and finished ends, Ferrex shielding material, reducing from 3.0 inch (7.62 cm) dia. to 2.0 inch (5.08 cm) dia.

14-1104-1438-00 — a straight length with black vinyl cover and unfinished ends, Ferrex shielding material, 3.5 inch (8.89 cm) dia., 38.0 feet (11.6 m) long.

Figure 2

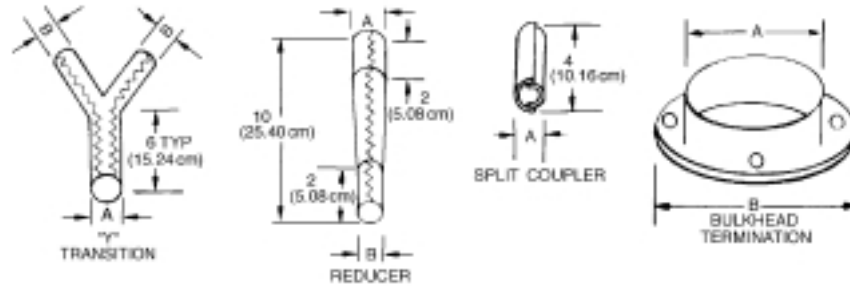


Table 2

STRAIGHT LENGTHS inch (mm)			
Nominal I.D.	Contained Diameter	Finished Ends	Bulk Length
1.0 (25.40)	0 to 0.75 (0 to 19.05)	14-1X14-04XX-XX	14-1X04-04XX-XX
1.5 (38.10)	0.50 to 1.25 (12.70 to 31.75)	14-1X14-06XX-XX	14-1X04-06XX-XX
2.0 (50.80)	1.00 to 1.75 (25.40 to 44.45)	14-1X14-08XX-XX	14-1X04-08XX-XX
2.5 (63.50)	1.50 to 2.25 (38.10 to 57.15)	14-1X14-10XX-XX	14-1X04-10XX-XX
3.0 (76.20)	2.00 to 2.75 (50.80 to 69.85)	14-1X14-12XX-XX	14-1X04-12XX-XX
3.5 (88.90)	2.50 to 3.25 (63.50 to 82.55)	14-1X14-14XX-XX	14-1X04-14XX-XX
4.0 (101.60)	3.00 to 3.75 (76.20 to 95.25)	14-1X14-16XX-XX	14-1X04-16XX-XX
5.0 (127.00)	3.50 to 4.75 (88.90 to 120.65)	14-1X14-20XX-XX	14-1X04-20XX-XX
6.0 (152.40)	4.50 to 5.75 (114.30 to 146.05)	14-1X14-24XX-XX	14-1X04-24XX-XX

Table 3

TRANSITION COMPONENTS inch (mm)			
Nominal I.D. (A)	Y Transitions	Reducers	Split Coupler
1.0 (25.40)	14-5114-04XX	—	15-6004-0005
1.5 (38.10)	14-5114-06XX	14-2114-06XX	15-6006-0005
2.0 (50.80)	14-5114-08XX	14-2114-08XX	15-6008-0005
2.5 (63.50)	14-5114-10XX	14-2114-10XX	15-6010-0005
3.0 (76.20)	14-5114-12XX	14-5114-12XX	15-6012-0005
3.5 (88.90)	14-5114-14XX	14-2114-14XX	15-6014-0005
4.0 (101.60)	14-5114-16XX	14-2114-16XX	15-6016-0005
5.0 (127.00)	14-5114-20XX	14-2114-20XX	15-6020-0005
6.0 (152.40)	14-5114-24XX	14-2114-24XX	15-6024-0005

Table 4

CODE XX IN TABLE 3	
Diameter B	Code XX
1.0 (25.40)	04
1.5 (38.10)	06
2.0 (50.80)	08
2.5 (63.50)	10
3.0 (76.20)	12
3.5 (88.90)	14
4.0 (101.60)	16
5.0 (127.00)	20
6.0 (152.40)	24

Table 5

BULKHEAD TERMINATIONS inch (mm)						
Nominal I.D. (A)	Standard Termination	Split Termination	Total Height	Bolt Circle	No. of Holes	Flange O.D. (B)
1.0 (25.40)	15-6004-0001	15-6004-0002	1.19 (30.22)	1.63 (41.30)	4	2.00 (50.80)
1.5 (38.10)	15-6006-0001	15-6006-0002	1.19 (30.22)	2.25 (57.15)	4	2.5 (64.42)
2.0 (50.80)	15-6008-0001	15-6008-0002	1.19 (30.22)	2.75 (69.85)	4	3.0 (77.12)
2.5 (63.50)	15-6010-0001	15-6010-0002	1.44 (36.58)	3.25 (82.55)	4	3.56 (89.82)
3.0 (76.20)	15-6012-0001	15-6012-0002	1.44 (36.58)	3.75 (95.25)	4	4.06 (102.52)
3.5 (88.90)	15-6014-0001	15-6014-0002	1.44 (36.58)	4.25 (107.95)	4	4.56 (115.22)
4.0 (101.60)	15-6016-0001	15-6016-0002	1.44 (36.58)	4.75 (120.65)	6	5.06 (127.92)
5.0 (127.00)	15-6020-0001	15-6020-0002	1.44 (36.58)	5.75 (133.35)	6	6.06 (153.32)
6.0 (152.40)	15-6024-0001	15-6024-0002	1.44 (36.58)	6.75 (145.05)	8	7.06 (178.72)